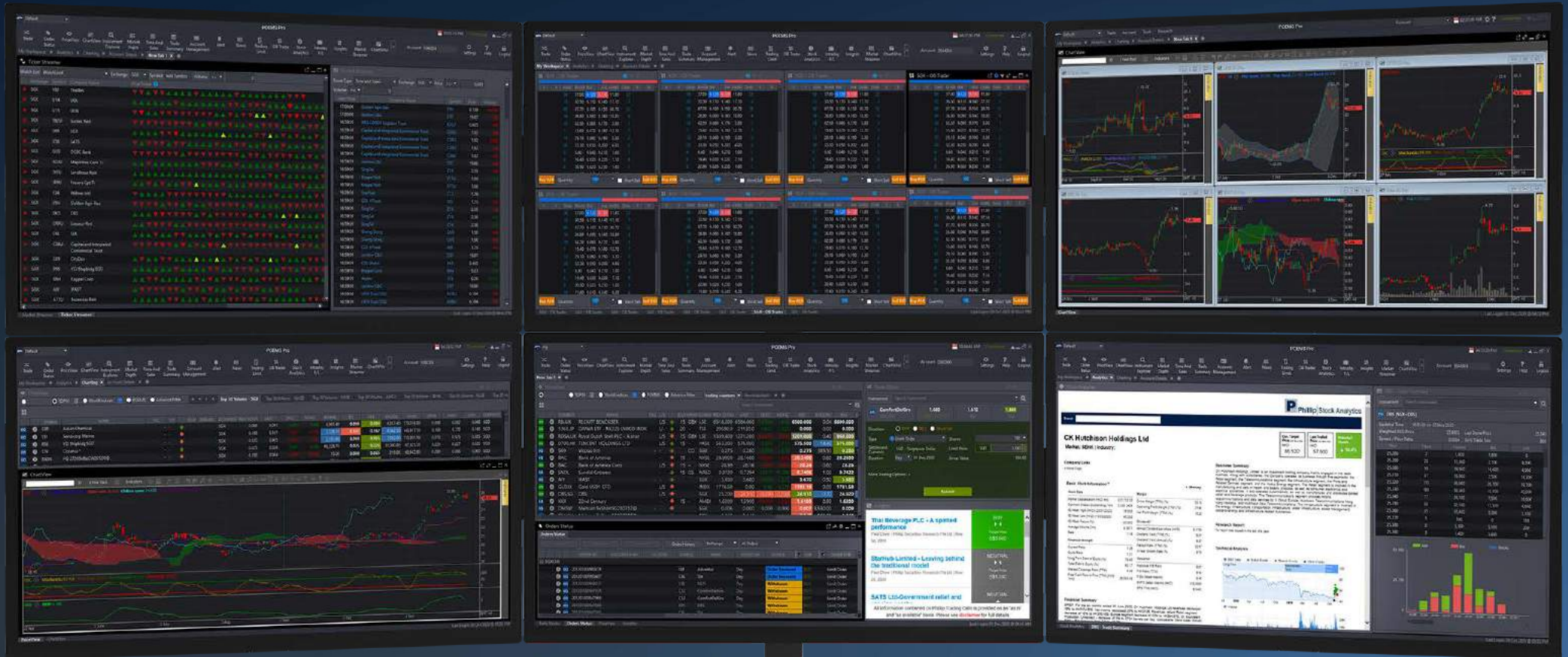


POEMS Pro

Designed by Traders, for Traders



CONTENTS

OVERVIEW 2

HOW TO TRADE

Trade Ticket	3
Submitting a Trade	4
OB Trader	5
Order Types	7
Order Status	8
Trade Settings	9

HOW TO MONITOR THE MARKET

Price View and Watchlists	11
Chart View	12
Market Depth	14
Time and Sales	14
Trade Summary	15
News and Stock Analytics	16
Alerts	17
Market Streamer	18
Insights	18

HOW TO MANAGE YOUR ACCOUNT

Account Management	19
Intraday Profit/Loss	20
Trading Limit	20

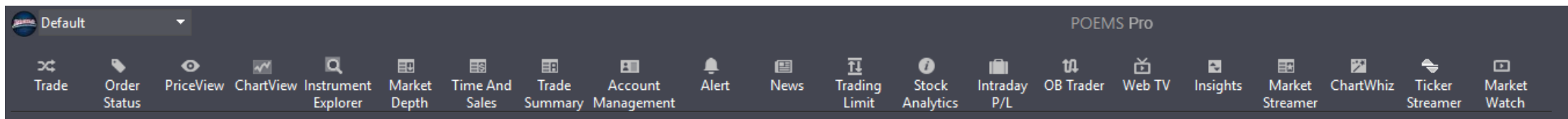
HOW TO CUSTOMISE THE PLATFORM

Workspaces and Tabs	21
Windows and Multi-screens	22
Settings	23
Themes & Languages	24
Keyboard Shortcuts	25

OVERVIEW

Main Navigation Toolbar

Access all POEMS Pro features and tools, edit workspaces and set preferences

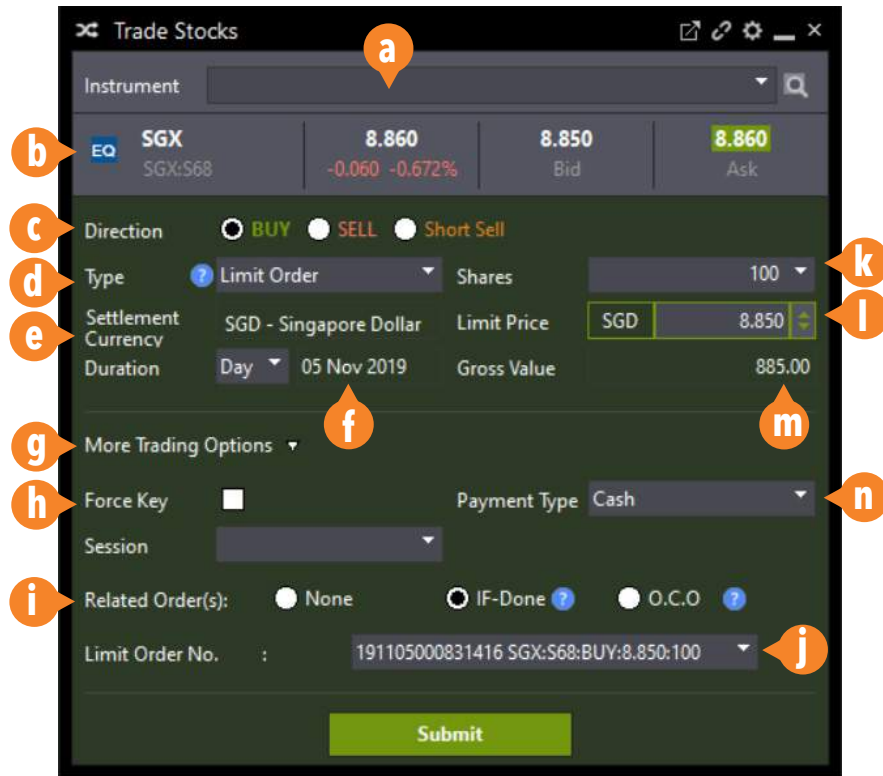


- a.** Open the trade ticket to place buy/sell orders
- b.** View the real time status of all types of orders carried out on the same trading day or past orders
- c.** View price data for all counters on Top 30 lists or Watchlists
- d.** Open single or multiple charts in a single window
- e.** Search for any counter from all available markets and add to a watchlist, place a trade, etc
- f.** View volume of trades at available buy/sell prices in the market
- g.** View time and sales data of specific counters
- h.** View stock movement in terms of volume traded at various price levels
- i.** Review your account and other related information
- j.** Set Price Alerts according to your defined criteria
- k.** Get real-time market news or search for counter-specific news updates
- l.** View available buy/sell limits and funds balance
- m.** Get insights to listed companies' fundamental, valuations and operating performance
- n.** View your realised/unrealised trades for the current trading day
- o.** Submit trades through Market Depth with a single click
- p.** Daily market news from NYSE covering global equities, currencies and commodities
- q.** Access latest research reports from the Phillip Research team
- r.** Monitor live Time & Sales transactions and intraday high/low
- s.** Stock screening tool that spots trading signals, providing indications and information
- t.** Daily news from NYSE covering global equities, currencies and commodities
- u.** Weekly market updates by experienced professionals

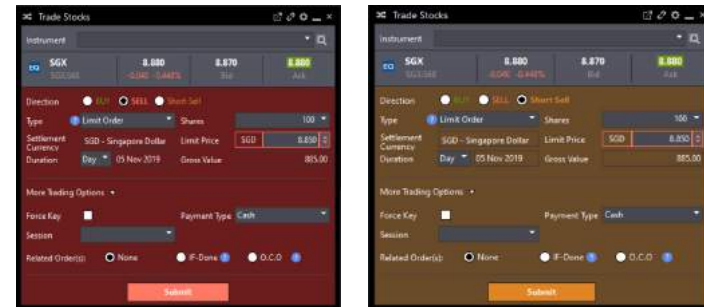
HOW TO TRADE

Trade Ticket | Submitting a Trade | OB Trader | Order Types | Order Status | Trade Settings

Trade Ticket



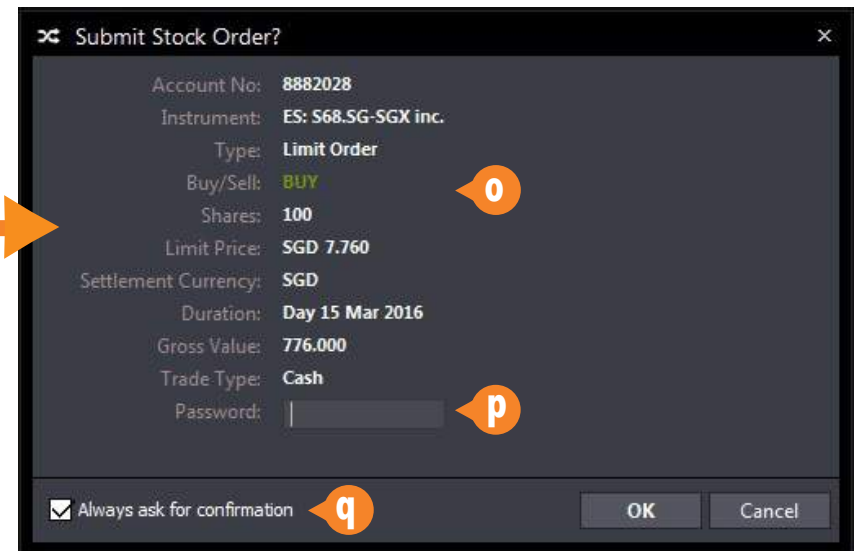
- a. Search for any counter by name or code
- b. Counter details
- c. Order Direction; Buy, Sell or Short Sell
- d. Order Type; Limit, Stop Limit Order, Trailing Stop Limit, Limit-If-Touch
- e. Settlement Currency of current order
- f. Order Duration (GTD up to 30 days)
- g. Click to show/hide more trading options
- h. Check to activate Force Key
- i. Related Conditional Orders; None or IF-Done
- j. Select Parent order for IF-Done
- k. Quantity of shares
- l. Set price
- m. Gross value based on price and quantity
- n. Select Trade Type (for SGX only): Cash, CPF or SRS



The colour of the Trade Ticket window will change according to the order direction



After clicking submit, a trade confirmation screen will appear



- o. Order details
- p. Enter password to confirm (You can disable this in settings)
- q. Option to not showing the confirmation screen again

HOW TO TRADE

Trade Ticket | **Submitting a Trade** | OB Trader | Order Types | Order Status | Trade Settings

Submitting a Trade

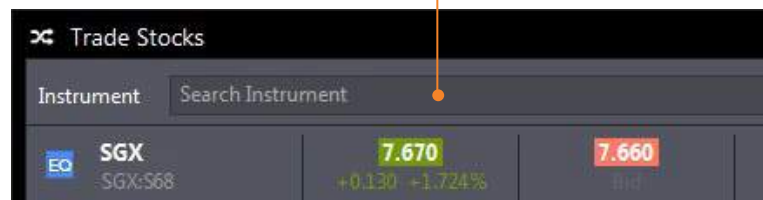
10 Ways to Submit a Trade

1. Double-click on a counter to open a new Trade Ticket or click once if Trade Ticket is opened and linked

2. Right-Click on counter and click Trade

3. Drag any counter from Price View/Instrument Explorer into an open Trade Ticket.

4. Search for any counter with the search bar on the Trade Ticket to bring up the counter details



The screenshot shows the 'PriceView' window with a list of instruments. A context menu is open over the 'SGX' counter, showing options like 'Trade SGX', 'Open Chart SGX', 'Set Price Alert', 'Time And Sales', 'Trade Summary', 'Stock Analytics', 'Market Depth', 'Add To Watchlist', and 'Remove From Watchlist'. The table below shows the instrument details:

	SYMBOL	NAME	(CHAN)	REV	CLOS	LAST	CHG	%CHG	BVOL(K)	BID	ASK	SVOL(K)
EQ	FBT	First Trust Amex Biotechnology	AMEX	157.4500	157.2600	-0.1900	-0.120	0.60	154.4700	160.0200	0.60	
EQ	C6L	SIA	SGX	9.780	9.840	0.060	0.613	4.80	9.840	9.850	9.80	
EQ	9099	THAI AGRO ENERGY PUBLIC C	SET	3.12	3.12	0.00	0.000	0.00	0.00	0.00	0.00	
EQ	AMZN	Amazon.com Inc.	NASD	2002.3800	2012.7100	10.3300	0.520	0.10	2015.5100	2017.9800	0.10	
OFD	WMI.SG	Wilmar Intl	SGX	3.170	3.180	0.010	0.313	22.60	3.170	3.180	309.70	
EQ	600	H	SGX	0.210	0.000	0.000	0.000	0.00	0.000	0.000	0.00	
OFD	ASX.OI	A	SGX	6316	0	-29	-0.450	0.00	6285	6288	0.00	
OFD	BALAU	B	SGX	10.340	10.800	0.460	4.490	0.23	10.790	10.810	0.07	
EQ	0044	H	SGX	68.900	69.000	0.100	0.150	12.00	68.950	69.000	1.20	
EQ	BTWZ	H	SGX	0.500	0.000	0.000	0.000	0.00	0.000	0.000	0.00	
EQ	7267	H	SGX	3256.0	3232.0	-24.0	-0.740	0.00	0.000	0.000	0.00	

The screenshot shows the 'Market Depth - SGX' window for instrument 'SGX [SGX:568]'. It displays a table of buy and sell orders:

BVOL	BUY	SELL	SVOL
22,700	7.110	7.120	2,700
29,200	7.100	7.130	66,200
13,900	7.090	7.140	42,400
3,300	7.080	7.150	29,300
10,500	7.070	7.160	46,900
700	7.020	7.170	1,300
3,000	7.000	7.180	6,500
2,000	6.990	7.190	14,500
17,200	6.980	7.200	19,400
40,000	6.970	7.220	14,900
5,000	6.960	7.230	17,000
8,100	6.950	7.250	6,500
1,100	6.930	7.260	500
3,500	6.920	7.270	42,600
1,500	6.910	7.300	100
3,100	6.900	7.320	42,900

5. Double-click on the **BVOL**, **BID**, **ASK** or **SVOL** price of the counter to open a new Trade Ticket with the selected price/quantity or click once if a Trade Ticket is already opened

6. Trade from Order Status
Right-click on counter in Order Status and click Trade to open new Trade Ticket

7. Trade from Time and Sales
Double-click the price in the prices column of the counter to open a new Trade Ticket with the selected price

8. Trade from Market Depth
Double-click on the **BUY** or **SELL** price of the counter to open a new Trade Ticket with the selected price

9. Trade from Trade Summary
Double-click on the price in the prices column of the counter to open a new Trade Ticket with the selected price

10. Trade through OB Trader
See next page.

HOW TO TRADE

Trade Ticket | Submitting a Trade | **OB Trader** | Order Types | Order Status | Trade Settings

OB Trader

OB (Order Book) trader allows users to submit trades through Market Depth with just a single click

Submit Orders

For Limit Orders

Double Left Click on BVol/SVol column at desired price to submit a buy/sell limit order

To Buy at / above best Ask Price

Ctrl + Double Left Click on SVol column at desired price

To Sell at / below best Bid Price

Ctrl + Double Left Click on BVol column at desired price

To Buy/Sell at current Ask/Bid Price

Single Left Click on respective buttons

For Stop Limit Orders

Single Right Click on BVol/SVol column at desired price to submit a buy/sell limit order

Ords - Total no. of orders on each buy/sell level

(Left) BVol - Current Buy Volume

(Right) SVol - Current Sell Volume

X	X	Ords	BVol (k)	Bid	Ask	SVol (k)	Ords	X	X
		18	5.20	8.870	8.880	33.40	40		
		21	43.60	8.860	8.890	60.30	23		
		10	26.60	8.850	8.900	9.30	6		
		4	15.70	8.840	8.910	19.80	4		100
		6	17.40	8.830	8.920	18.20	4		200
100		4	6.30	8.820	8.930	13.80	5		
100		4	9.50	8.810	8.940	7.80	4		
		4	9.00	8.800	8.950	42.00	18		
100		1	1.00	8.790	8.960	11.20	7		100
		2	3.30	8.780	8.970	7.10	2		
		1	1.10	8.770	8.980	13.10	5		
		1	2.00	8.760	8.990	6.30	7		
		8	16.90	8.750	9.000	127.20	27		
		3	21.10	8.740	9.010	3.00	1		

Market Buy/Sell Strength Indicator

This bar shows the ratio of the sum of orders queuing to buy versus the sum of order queuing to sell

Click here to change to the ladder view

Amend Orders

Single Right Click on Limit or Stop Limit Order(s) queued or

Withdraw Orders

Double Left Click on Limit or Stop Limit Order(s) queued

Withdraw All Bid / Ask orders

Single Left Click on the "X" at the top of the column of Bid / Ask Queued Orders

SELL Stop Limit Order(s) will appear here

BUY Limit Order(s) will appear here

SELL Limit Order(s) will appear here

BUY Stop Limit Order(s) will appear here

HOW TO TRADE

Trade Ticket | Submitting a Trade | **OB Trader** | Order Types | Order Status | Trade Settings

OB Trader (Ladder View)

Market Buy/Sell Strength Indicator

This bar shows the ratio of the sum of orders queuing to buy versus the sum of order queuing to sell

Submit Orders

For Limit Orders

Double Left Click on BVol/SVol column at desired price to submit a buy/sell limit order

To Buy at / above best Ask Price

Ctrl + Double Left Click on SVol column at desired price

To Sell at / below best Bid Price

Ctrl + Double Left Click on BVol column at desired price

To Buy/Sell at current Ask/Bid Price

Single Left Click on respective buttons

For Stop Limit Orders

Single Right Click on BVol/SVol column at desired price to submit

BUY Limit Order(s) will appear here

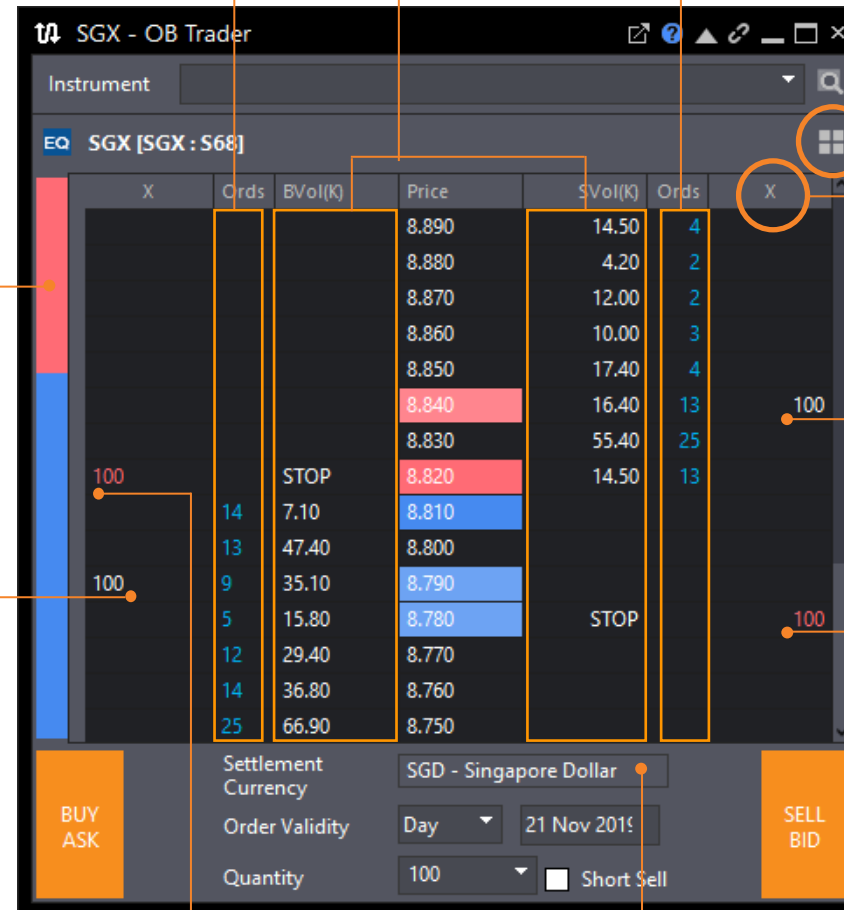
BUY Stop Limit Order(s) will appear here in RED

Select Settlement Currency for Non-SGD listed products

Ords - Total no. of orders on each buy level

(Left) BVol - Current Buy Volume
(Right) SVol - Current Sell Volume

Ords - Total no. of orders on each sell level



Click here to change to Market Depth

Withdraw All Bid / Ask orders
Single Left Click on the "X" at the top of the column of Bid / Ask Queued Orders

Amend Orders

Single Right Click on Limit or Stop Limit Order(s) queued or

Withdraw Orders

Double Left Click on Limit or Stop Limit Order(s) queued

SELL Limit Order(s) will appear here

SELL Stop Limit Order(s) will appear here in RED

HOW TO TRADE

Trade Ticket | Submitting a Trade | OB Trader | **Order Types** | Order Status | Trade Settings

ORDER TYPE	DEFINITION	EXCHANGES
Limit	<p>A Limit Order is an order to buy or sell a stock at a specific price or lower / higher.</p> <p>A Buy Limit Order can only be executed at the limit price or lower, and a Sell Limit Order can only be executed at the limit price or higher. A Limit Order can only be filled if the stock's market price reaches the limit price. While limit orders do not guarantee execution, they help ensure that an investor does not pay more than a pre-determined price for a stock.</p>	ALL Exchanges
Stop Limit	A Stop Limit order is an order to buy or sell a stock once the price of the stock reaches a specified price, known as the Trigger Price. Once the trigger price is reached, a Stop Limit order becomes a limit order that will be executed at a specified price (or better).	
Limit-If-Touch	<p>A Limit-if-Touched is an order to buy (or sell) a contract at a specified price or better, below (or above) the market. This order is held in the system until the trigger price is touched. An LIT order is similar to a Stop Limit order, except that an LIT sell order is placed above the current market price, and a Stop Limit sell order is placed below.</p> <p>A LIT order is similar to a Limit order except that a LIT Buy order allows the trader to ensure market support (trigger price) is reached before entering a Limit Buy order with such a price that the buy order has a high probability to be filled, while a limit buy order may or may not be filled when last done price is traded at this price.</p>	SGX / HKEx / NYSE / NYSE MKT / NASDAQ
One-Cancels -The-Other (OCO)	It is an order that allows the submission of 2 orders simultaneously to either take profit or cut loss. If one part of the order is executed, the other is automatically cancelled. OCO orders are generally used by traders for volatile stocks that trade in a wide price range.	
IF-Done	It is an order that is structured of two or more steps that must occur in a specified sequence. Only after the first step in the sequence is completed, then will the second step be activated. This related order can be used if you are unable to continuously monitor the market but want to participate in the market movements in your favour and/or exit a move against you. Currently, only Limit Orders can be used for an If-Done related order.	ALL Exchanges
Market	A Market Order is an order placement with a defined quantity but without a price. It will be traded at the best price currently available in the market.	
Market-On-Open (MOO)	A MOO Order is an order placement with a defined quantity but without a price. It is placed before a market is opened and will trade at the best price when the exchange starts trading. It is an order to execute at the day's opening price.	NYSE / NYSE MKT / NASDAQ
Market-On-Close (MOC)	A MOC order is an order placement with a defined quantity but without a price. It is placed during the market trading session and will be executed at the closing. It is an order to execute at the day's closing price.	

*For all **Stop Limit**, **Limit-If-Touch** and **IF-Done** orders, clients are to ensure that their trading accounts have sufficient buying or selling trading limits to allow orders to be submitted when the order's triggering conditions are met, else order triggered may be rejected due to insufficient trading limit.

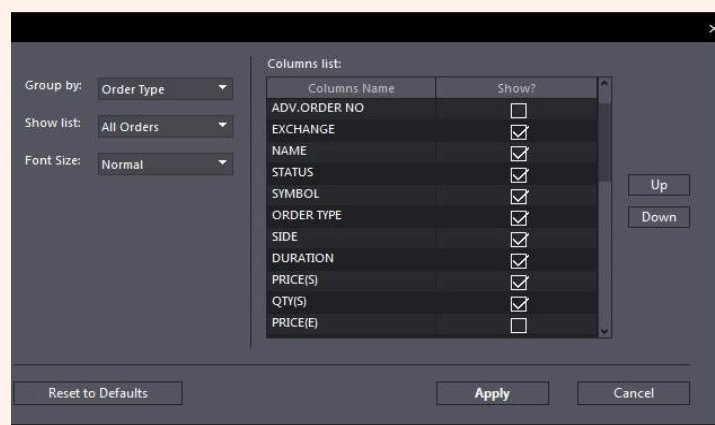
HOW TO TRADE

Trade Ticket | Submitting a Trade | OB Trader | Order Types | **Order Status** | Trade Settings

Order Status

	ORDER NO	CLORDID	SYMBOL	NAME	SIDE	STATUS	ORDER TYPE	DURATION	PRICE(S)	QTY(S)	PRICE(E)	QTY(E)	QTY(REM)	TRIGGERPRICE	ORDER TIME
Stop Limit Order(5)															
EQ	O961190718000221		AMBO	Ambow Education - ADR	BUY	New Order	Stop Limit Order	Day	6.3400	1	0.000	0	1	6.4000	18 Jul 2019 09:45 AM
EQ	190718005393848		S68	SGX	BUY	Order Received	Stop Limit Order	Day	8.020	100	0.000	0	100	8.020	18 Jul 2019 09:43 AM
EQ	190718005393782		S58	SATS	BUY	Order Received	Stop Limit Order	Day	5.350	100	0.000	0	100	5.340	18 Jul 2019 09:42 AM
EQ	190718005393093		BN4	Keppel Corp	BUY	Order Received	Stop Limit Order	Day	6.640	100	0.000	0	100	6.650	18 Jul 2019 09:29 AM
EQ	190718005393091		BN4	Keppel Corp	BUY	Order Received	Stop Limit Order	Day	6.640	100	0.000	0	100	6.650	18 Jul 2019 09:29 AM
Limit Order(16)															
DFD	248199		DBS.SG	DBS	BUY	Order Received	Limit Order	Day	26.270	100	0.000	0	100	0.000	18 Jul 2019 09:44 AM
EQ	294792		601111	Air China Ltd	BUY	Order Received	Limit Order	Day	9.070	100	0.000	0	100	0.000	18 Jul 2019 09:44 AM
EQ	190718005393824		A68U	Ascott Reit	BUY	Order Received	Limit Order	Day	1.290	400	0.000	0	400	0.000	18 Jul 2019 09:43 AM
EQ	294773		JD	JD.com	BUY	Order Received	Limit Order	Day	30.7000	4	0.0000	0	4	0.0000	18 Jul 2019 09:42 AM
DFD	248095		UOB.SG	UOB	BUY	Order Received	Limit Order	Day	26.560	100	0.000	0	100	0.000	18 Jul 2019 09:28 AM
EQ	294314		8290	Ahsay Backup Software Development	BUY	Order Received	Limit Order	Day	0.049	10,000	0.000	0	10,000	0.000	18 Jul 2019 09:00 AM
DFD	246450		DBS.SG	DBS	BUY	Order Received	Limit Order	Day	26.260	100	0.000	0	100	0.000	17 Jul 2019 05:08 PM
EQ	288598		FNMA	Fannie Mae	SELL	Order Received	Limit Order	Day	2.0000	100	0.0000	0	100	0.0000	17 Jul 2019 04:06 PM
EQ	288593		FNMA	Fannie Mae	BUY	Order Received	Limit Order	Day	2.0000	100	0.0000	0	100	0.0000	17 Jul 2019 04:05 PM

- a. Amend orders
- b. Withdraw selected orders
- c. View order history of up to 7 days
- d. Filter orders by Exchange, Product Type, Order Type or Symbol
- e. Choose to display all orders or by order status
- f. Search Orders by counter name or symbol
- g. Click to show/hide different filter groups
- h. Click and hold to rearrange columns



Order Status Settings in Settings Menu

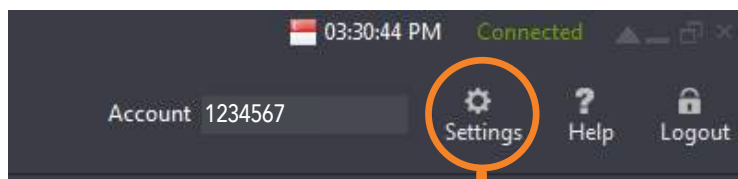
Order Status General Settings

- Group by** - Set default grouping by: Exchange, Product Type, Order Type or Symbol
- Show list** - Set default order types by different order status
- Font size** - Set default font size: Normal, Medium or Large
- Columns list** - Set default column arrangement and attributes

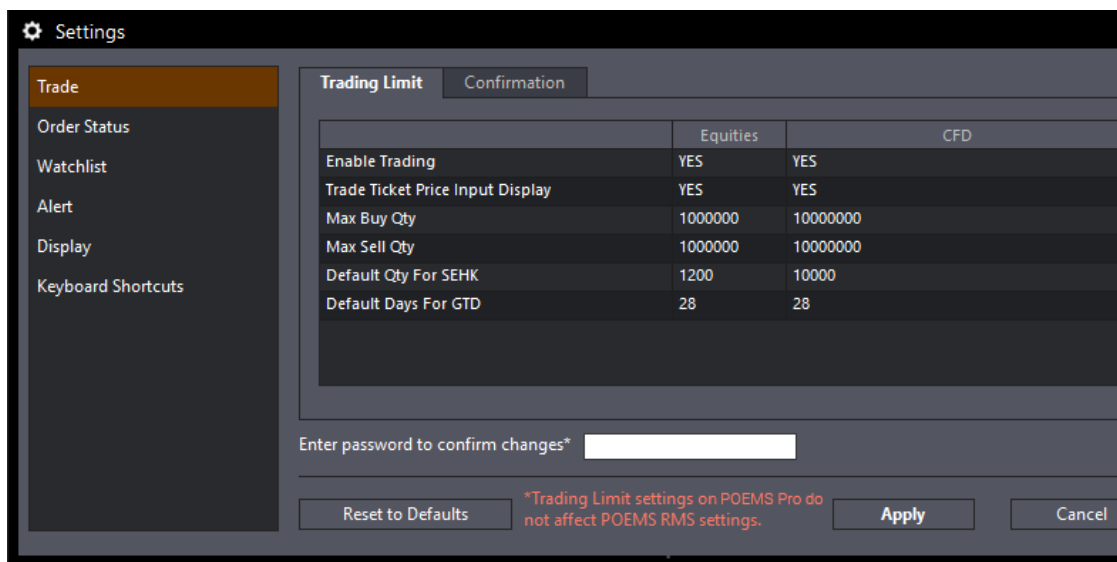
HOW TO TRADE

Trade Ticket | Submitting a Trade | OB Trader | Order Types | Order Status | Trade Settings

Trade Settings



Trade Settings can be found under Settings at the top-right corner of the application



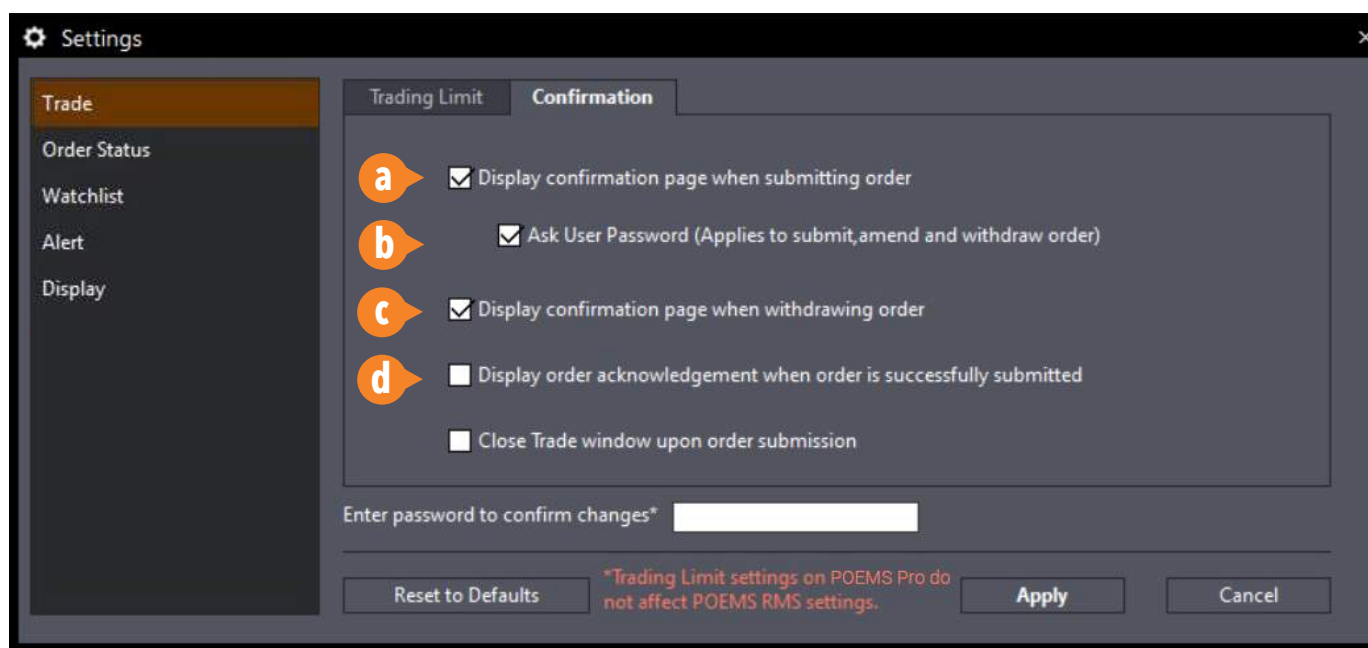
Trading Limit Settings

Settings	Default	Meaning
Enable Trading	Yes	If Changed to "no", a popup window will pop when user click submit in the trade ticket. The message will say "Trading is disabled, please enable it in setting."
Trade Ticket Price Input display	Yes	If Changed to "no", the shares and Limit price on the trade ticket will not display. User can choose to key in the price.
Max Buy Qty	1,000,000	Maximum of shares allowed on the Buy trade ticket.
Max Sell Qty	1,000,000	Maximum of shares allowed on the Sell trade ticket.
Default Settlement Currency	SGD	The chosen settlement currency in the trade ticket will be populated in the trade ticket.
Default Days for GTD	5	The number of days for GTD.
Default Qty for SGX, KLSE, NASD, NYSE, AMEX, SEHK, SSE, SET	1	This is the default display quantity for the exchange. Please choose exchange from dropdown. If quantity is less than minimum lot size of the counter, the minimum lot size will show.

HOW TO TRADE

Trade Ticket | Submitting a Trade | OB Trader | Order Types | Order Status | **Trade Settings**

Trade Settings (Confirmation)



Confirmation Settings

- a.** When **unchecked**, confirmation page will not be displayed during order submission
- b.** When **unchecked**, no password input order confirmation would be required
- c.** When **unchecked**, no confirmation page will be displayed when withdrawing order
- d.** When **unchecked**, no order acknowledgement will be displayed when order is submitted successfully
- e.** When **unchecked**, Trade Ticket window will remain open after order submission

HOW TO MONITOR THE MARKET

Price View and Watchlists | Chart View | Market Depth | Time and Sales | Trade Summary | News and Stock Analytics | Alerts | Market Streamer | Insights

Price View and Watchlists

View real-time price data for all counters on Top 30 lists or Watchlists

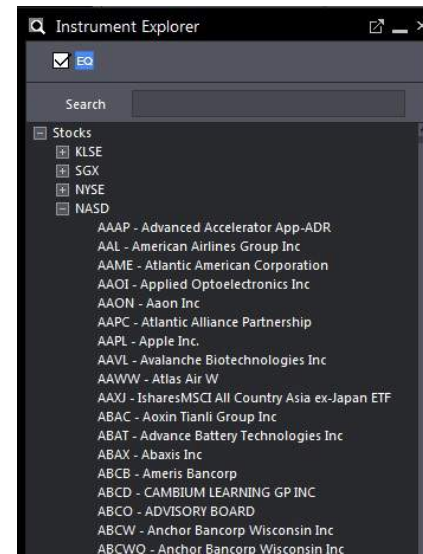
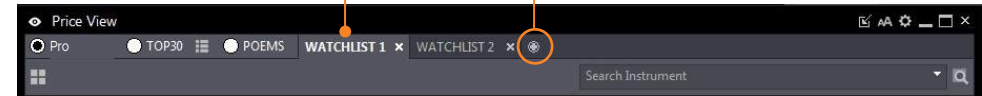
	SYMBOL	NAME	CHANG(REV CLOS)	LAST	CHG	%CHG	BVOLIK	BID	ASK	SVOLIK	VOLIK	OPEN
EQ	FBT	First Trust Amex Biotechnology	AMEX	157.4500	157.2600	-0.1900	0.60	154.4700	160.0200	0.60	78.17	157.0100
EQ	C6L	SIA	AMEX	9.780	9.840	0.0600	4.80	9.840	9.850	9.80	42.30	9.780
EQ	9099	THAI AGRO ENERGY PUBLIC C	SET	3.12	3.12	0.00	0.00	0.00	0.00	0.00	0.00	0.00
EQ	AMZN	Amazon.com Inc.	NASD	2002.3800	2012.7100	10.3300	0.50	2015.5100	2017.9800	0.10	4,204.38	2007.0000
EQ	WMI.SG	Wilmar Intl	SGX	3.170	3.180	0.010	0.31	3.170	3.180	309.70	435.90	3.160
EQ	600	Hyflux	SGX	0.210	0.000	0.000	0.000	0.000	0.000	0.000	0.00	0.000
EQ	ASX.OI	Aust200 Index A\$5 CFD	INDX	6316	0	-29	-0.450	0.00	6285	6288	0.00	6312
EQ	BALAU	BELLAMYS AUSTRALIA LTD	ASX	10.340	10.800	0.460	4.450	10.790	10.810	0.07	619.22	10.430
EQ	0044	Hong Kong Aircraft Engineerin	SEHK	68.900	69.000	0.100	0.150	68.950	69.000	1.20	3.20	69.000
EQ	BTWZ	Hyflux 6% PerCapSec#	SGX	0.500	0.000	0.000	0.000	0.000	0.000	0.000	0.00	0.000
EQ	7267	HONDA MOTOR CO LTD	TSE	3256.0	3232.0	-24.0	-0.740	0.000	0.000	0.00	881.80	3256.0
EQ	N2H	Hyflux 6% CPS#	SGX	65.370	0.000	0.000	0.000	0.000	0.000	0.00	0.00	0.000
EQ	TP	CNMIC Goldmine	SGX	0.245	0.000	0.000	0.000	0.240	0.245	54.00	0.00	0.000
EQ	EU5TX50.IX	-	INDX	3391.050	0.000	-0.500	0.000	3390.560	3391.540	0.00	0.00	3384.550
EQ	OCBS.SG	OCBC Bank	SGX	11.250	11.270	0.020	0.177	11.260	11.270	1.50	264.50	11.250
EQ	TQ5	Fraser's Property	SGX	1.670	1.670	0.000	0.000	1.660	1.670	22.80	0.30	1.670
EQ	F34	Wilmar Intl	SGX	3.170	3.180	0.010	0.31	3.170	3.180	309.70	435.90	3.160
EQ	UOB.SG	UOB	SGX	26.780	26.810	0.030	0.112	26.810	26.840	5.40	48.00	26.850
EQ	BN4	Keppel Corp	SGX	6.540	6.560	0.020	0.30	6.550	6.560	14.30	137.00	6.520
EQ	H17	Hi-P	SGX	1.000	1.020	0.020	2.00	1.010	1.020	193.80	282.30	1.010
EQ	UOB.SG	UOB	SGX	26.780	26.810	0.030	0.112	26.810	26.840	5.40	48.00	26.850
EQ	U11	UOB	SGX	26.780	26.810	0.030	0.112	26.810	26.840	5.40	48.00	26.850
EQ	DBS.SG	DBS	SGX	24.950	25.000	0.050	0.20	24.980	25.000	3.00	1,021.10	24.960
EQ	0700.HK	TENCENT HOLDINGS LTD	HKSE	332.800	329.200	-3.600	-1.080	329.200	329.800	0.10	955.29	329.200
EQ	SGT.SG	SingTel	SGX	3.200	3.190	-0.010	-0.312	3.190	3.190	1,666.90	3,680.90	3.190

- Select Watchlist group (Pro, Top 30, World Indices, POEMS 2.0 imported Watchlists, Advance Filter)
- Dropdown menu to select Top 30 list by criteria
- Right-click to add/remove column fields
- Click and hold to rearrange columns
- Search for any counter and click to add to existing watchlist
- Stock Analytics for respective counter

Double/right-click to rename, right-click to delete watchlist or click on X

Add New Watchlist

To add a new watchlist, click here



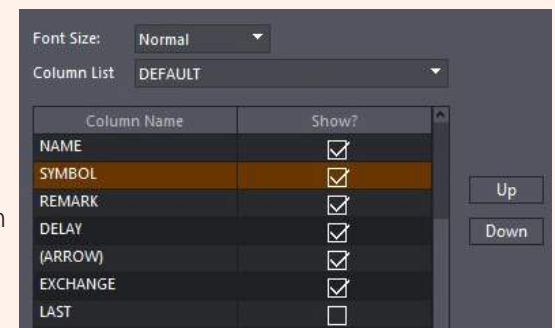
3 Ways to Add Counters to your Watchlists

- Right-click on counter in Price View and 'Add To Watchlist'. You can also hold shift to select multiple counters and add to watchlist at once
- Drag any counter from Instrument Explorer into an open Watchlist. Once again, hold shift to select and drag multiple counters at once.
- Search for any counter in the 'Search Instrument' bar and click to add to existing watchlist.

Instrument Explorer

Watchlist General Settings

Font size - Set default font size: Normal, Medium or Large
Columns list - Set default column arrangement and attributes



Watchlist Settings in Settings Menu

HOW TO MONITOR THE MARKET

Price View and Watchlists | **Chart View** | Market Depth | Time and Sales | Trade Summary | News and Stock Analytics | Alerts | Market Streamer | Insights

Chart View

Open single or multiple charts in a single window

- a. Search for any instrument and select to show chart
- b. Change cycle
- c. Change time period
- d. Change chart type
- e. Add indicators
- f. Show/hide drawbar tools
- g. Counter name and indicator details
- h. Legend and stock details
- i. Additional indicators



Drawing Tools

HOW TO MONITOR THE MARKET

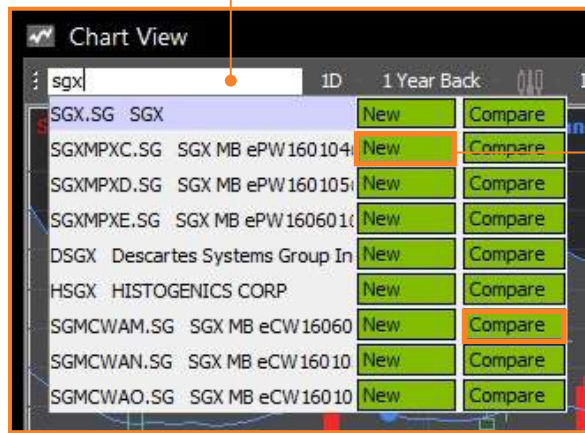
Price View and Watchlists | **Chart View** | Market Depth | Time and Sales | Trade Summary | News and Stock Analytics | Alerts | Market Streamer | Insights

Chart View

Open single or multiple charts in a single window

Search to add/compare different charts

Type in to search for any counter and drop-down menu will appear for search results



Click on **New** to add a chart of the selected counter in the existing Chart View window

Click on **Compare** to add a counter into the existing chart for comparison.



HOW TO MONITOR THE MARKET

Price View and Watchlists | Chart View | **Market Depth** | Time and Sales | Trade Summary | News and Stock Analytics | Alerts | Market Streamer | Insights

Market Depth

View a total list of the available SGX/HKEx buy/sell prices in the queue

- a.** Search for any SGX/HKEx counter to bring up its Market Depth*. You can also drag the counter from Price View / Instrument Explorer to Market Depth
- b.** Right click to select/de-select attributes
- c.** Click and hold to rearrange columns
- d.** Double-click on the BUY or SELL price to open a new Trade Ticket with the selected price

Instrument	BVOL	BUY	SELL	SVOL
SGX [SGX : S68]	22,700	7.110	7.120	2,700
	29,200	7.100	7.130	66,200
	13,900	7.090	7.140	42,400
	3,300	7.080	7.150	29,300
	10,500	7.070	7.160	46,900
	700	7.020	7.170	1,300
	3,000	7.000	7.180	6,500
	2,000	6.990	7.190	14,500
	17,200	6.980	7.200	19,400
	40,000	6.970	7.220	14,900
	5,000	6.960	7.230	17,000
	8,100	6.950	7.250	6,500
	1,100	6.930	7.260	500
	3,500	6.920	7.270	42,600
	1,500	6.910	7.300	100
	3,100	6.900	7.320	42,900
	1,000	6.880	7.420	1,000
	3,500	6.870	7.600	12,000
	8,000	6.860	7.690	5,000

* SGX Market Depth and Hong Kong Exchange Live Price subscriptions are required for the respective markets

Time and Sales

View time and sales data of specific counters

Instrument	Search Instrument		
SGX [SGX : S68]			
Updated Time	10:26:20 on 16 Feb 2016		
Day High	7.100	Day Low	6.980
Net Change	0.080	Last Done	7.100
Total Value	3,711,214	Total Volume (K)	527.50
Time	Price	Trade Size	Type
10:23:43	7.090	200	Sell Down
10:23:43	7.090	200	Sell Down
10:23:43	7.090	200	Sell Down
10:23:43	7.090	200	Sell Down
10:23:43	7.090	600	Sell Down
10:23:43	7.090	200	Sell Down
10:23:39	7.100	100	Buy Up
10:22:49	7.090	800	Sell Down
10:22:41	7.100	100	Buy Up
10:22:41	7.100	300	Buy Up
10:22:41	7.100	100	Buy Up
10:22:41	7.100	600	Buy Up
10:22:41	7.100	200	Buy Up
10:22:41	7.100	100	Buy Up
10:22:41	7.100	100	Buy Up
10:22:41	7.100	100	Buy Up
10:22:41	7.100	100	Buy Up
10:22:40	7.100	900	Buy Up

- a.** Search for any counter to bring up its Time and Sales, you can also drag the counter from Price View / Instrument Explorer to Time and Sales
- b.** Selected counter's daily trade summary / information
- c.** Click and hold to rearrange columns
- d.** Double-click the price to open a new Trade Ticket with the selected price

HOW TO MONITOR THE MARKET

Price View and Watchlists | Chart View | Market Depth | Time and Sales | **Trade Summary** | News and Stock Analytics | Alerts | Market Streamer | Insights

Trade Summary

This summary shows the stock movement in terms of volume traded at different price levels

- a.** Search for any SGX counter to bring up its Trade Summary. You can also drag the counter from Price View / Instrument Explorer to Trade Summary
- b.** Counter Trade Statistics
- c.** Volume and Price visualised in bar graph
- d.** Double-click on the price to open a new Trade Ticket with the selected price



HOW TO MONITOR THE MARKET

Price View and Watchlists | Chart View | Market Depth | Time and Sales | Trade Summary | **News and Stock Analytics** | Alerts | Market Streamer | Insights

News

Access market news from around the world with Factiva

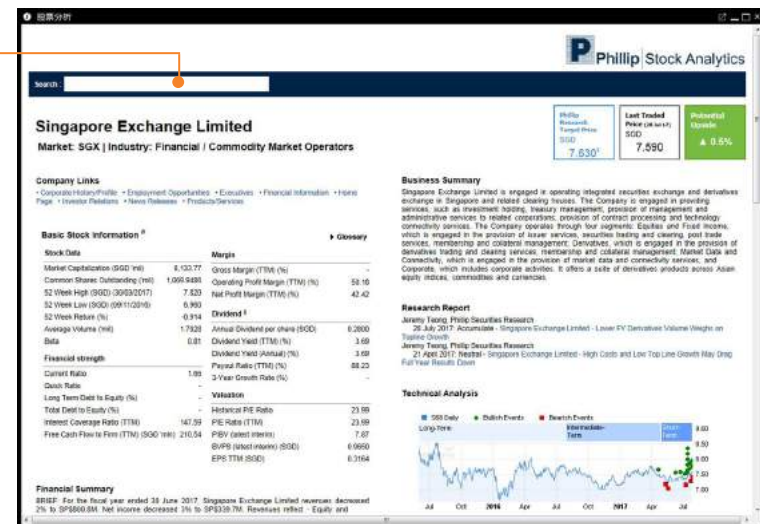
Search for any news article by stock name or related words

Time	Title	Source
- 06/10/2016	Want lower motor insurance policy? Allow NTUC Income to	The Straits Times
14:02 06/10/2016	Dow Jones Asia-Pacific Top Stories Sked for October 6	Dow Jones Institutional News
14:01 06/10/2016	WATCH: F1 Report - Malaysia GP	Dow Jones Institutional News
13:59 06/10/2016	WATCH: F1 Report - Malaysia GP	Dow Jones Institutional News
- 06/10/2016	UOL-UIC joint venture buys en-bloc former HUDC estate Ra	The Straits Times
13:40 06/10/2016	New Mexico moves closer to slashing state agency funding	Associated Press Newswires
13:31 06/10/2016	Chinese automaker Lifan unveils new model for Argentine n	Xinhua News Agency
13:29 06/10/2016	New Hope Group Co. Ltd. opens Australian headquarters	Xinhua News Agency
- 06/10/2016	Swiber's application for judicial management approved by	The Straits Times
13:14 06/10/2016	Press Release: Fitch Assigns Jubilant Pharma's USD Notes F	Dow Jones Institutional News
13:02 06/10/2016	Oil Price Rebound Pushes up Singapore's Oil, Gas Stocks --	Dow Jones Institutional News
- 06/10/2016	FED:BOQ profit growth slows amid low rates	Australian Associated Press Fin
- 06/10/2016	FED:Housing overvalued like most other assets	Australian Associated Press Fin
12:44 06/10/2016	Nomura Starts Coverage on SingPost With Buy Call -- Mark	Dow Jones Institutional News
12:42 06/10/2016	Malaysian AM Cash Market Prices for Palm Oil - October 6	Dow Jones Institutional News
12:40 06/10/2016	*S&P;PGRBulletin: Adani Trans Rtg Unaffected By Ac	Dow Jones Institutional News
- 06/10/2016	Want lower motor insurance policy? Allow Income to track I	The Straits Times
- 06/10/2016	FED:Drop in oil prices slashes trade deficit	Australian Associated Press Fin
12:32 06/10/2016	LPI Capital Bhd Malaysia 3rd-Quarter 2016 Earnings Summ	Dow Jones Institutional News
12:24 06/10/2016	Man convicted of 1971 murder seeking new trial	Associated Press Newswires

Stock Analytics

Phillip Stock Analytics gives you insights to listed companies' fundamental, valuations and operating performance

Search for Stock by name



Access Stock Analytics from Price View / Watchlists

Click to access Stock Analytics of that specific stock

EQ	B2F	M1		2.560	0.787
EQ	CC3	StarHub	Trade SGX	3.430	1.179
EQ	D05	DBS	Open Chart SGX	15.320	4.146
EQ	5238	AirAsia X	Set Price Alert	0.29	3.510
EQ	AAPL	Apple Inc.	Time And Sales	101.5000	0.740
EQ	GPRO	GOPRO INC	Trade Summary	13.5800	4.300

Right-click counter to select Stock Analytics from menu

- Trade SGX
- Open Chart SGX
- Set Price Alert
- Time And Sales
- Trade Summary
- Stock Analytics
- Market Depth
- Add To Watchlist
- Remove From Watchlist

Price View

HOW TO MONITOR THE MARKET

Price View and Watchlists | Chart View | Market Depth | Time and Sales | Trade Summary | News and Stock Analytics | Alerts | Market Streamer | Insights

Alerts

Set Price Alerts according to your defined criteria

a New **b** Update **c** Remove

	Exchange	Symbol	Name	Trigger Once	Validity	Delay	Alert When	Current Value	Alert Via	Status	
<input type="checkbox"/>	EO	SEHK	2322.HK	Noble Century Inv Holdir	Once	04 Mar 2016	15	Bid Price >= 6.5900	6.5800	Pro	Active
<input type="checkbox"/>	EO	SGX	D05.SG	DBS	Once	08 Mar 2016		Ask Price <= 15.250	15.280	Pro	Active
<input type="checkbox"/>	EO	SGX	BN4.SG	Keppel Corp	Multiple	18 Mar 2016		Ask Price <= 6.030	6.010	Pro	Active

- a.** Click to add new Price Alert
- b.** Update settings of existing Price Alerts
- c.** Remove existing Price Alerts
- d.** Search for counter by name or symbol to bring up selected counter's details

d

Instrument: Search Instrument

SGX SGX:S68.SG 7.690 +0.150 +1.989% 7.680 Bid 7.690 Ask

Alert me by: Pro

Alert me when: Bid Price

is: Less Than or Equal

to: 7.660

Valid until: 04 Mar 2016

Trigger Type: Once

Submit

Set Price Alert from Watchlist

	SYMBOL	NAME	
EO	B2F	M1	↑
EO	CC3	StarHub	↑
EO	D05	DBS	↑
EO	5238	AirAsia X	↑
EO	AAPL	Apple Inc.	↑
EO	GPRO	GOPRO INC	↑

- Trade SGX
- Open Chart SGX
- Set Price Alert**
- Time And Sales
- Trade Summary
- Stock Analytics
- Market Depth
- Add To Watchlist
- Remove From Watchlist

Price View

Click to open Price Alert window to set Price Alert for selected counter

Settings

Order Alert

Price alert

Display Alert When the Order is:

- Done /Close
- Rejected
- Amended
- Withdrawn

Show Alert Message: permanently

10 seconds

20 seconds

30 seconds

Reset to Defaults

Apply Cancel

Alert Settings in Settings Menu

Order Alert - Set which order status(s) would display alerts: Done, Rejected, Amended, Withdrawn

Price Alert - Set which price alert status(s) to be displayed in Price Alert View: ALL, Triggered, Active, Expired

Show Alert Message - Set how long the alert message is displayed

HOW TO MONITOR THE MARKET

Price View and Watchlists | Chart View | Market Depth | Time and Sales | Trade Summary | News and Stock Analytics | Alerts | **Market Streamer** | Insights

Market Streamer

Monitor live Time & Sales transactions and intraday high/low across the exchange

Select Time & Sales or Intraday High/Low data
Filter by volume

Alert Time	Company Name	Symbol	Price	Volume
09:47:47	DBS	D05	25.04	300
09:47:47	DBS	D05	25.04	200
09:47:47	DBS	D05	25.05	900
09:47:41	Venture	V03	18.05	200
09:47:20	DBS	D05	25.04	200
09:47:20	DBS	D05	25.04	300
09:47:20	DBS	D05	25.04	800
09:47:20	DBS	D05	25.04	100
09:47:20	DBS	D05	25.04	400
09:47:14	OCBC Bank	O39	11.31	500
09:47:11	OCBC Bank	O39	11.32	1,900
09:47:11	OCBC Bank	O39	11.32	200
09:47:11	OCBC Bank	O39	11.32	700
09:47:11	OCBC Bank	O39	11.32	100
09:47:11	OCBC Bank	O39	11.32	400
09:47:11	OCBC Bank	O39	11.32	100
09:47:11	OCBC Bank	O39	11.32	900
09:47:10	Venture	V03	18.03	100
09:47:10	Venture	V03	18.03	100
09:47:08	OCBC Bank	O39	11.32	100
09:47:08	OCBC Bank	O39	11.32	400
09:47:08	OCBC Bank	O39	11.32	100
09:47:08	OCBC Bank	O39	11.32	100
09:47:08	OCBC Bank	O39	11.32	200
09:47:08	Venture	V03	18	100
09:47:08	OCBC Bank	O39	11.32	2,800

Insights

Gain insights with latest research reports from the Phillip Research team

Click to open selected report

Report Title	Analyst	Trading Call	Target Price
Raffles Medical Group Ltd: Waiting for new capacity to drive growth	Soh Lin Sin Phillip Securities Research Pte Ltd Aug 01, 2017	NEUTRAL	1.27
United Overseas Bank Limited: Steady Performance Amid Unfavourable Rates	Jeremy Teong Phillip Securities Research Pte Ltd Jul 31, 2017	REDUCE	20.18
Sembcorp Marine Ltd: Longer than expected recovery	Chen Guang Zhi Phillip Securities Research Pte Ltd Jul 31, 2017	REDUCE	1.55
Sheng Siong Group: Two new stores in 2H17; Cutting dividends for growth	Soh Lin Sin Phillip Securities Research Pte Ltd Jul 28, 2017	ACCUMULATE	1.06
China Aviation (Singapore) Oil: Speed bump in associate performance	Chen Guang Zhi Phillip Securities Research Pte Ltd Jul 28, 2017	BUY	2
Singapore Exchange Limited: Lower FY Derivatives Volume Weighs on Topline Growth	Jeremy Teong Phillip Securities Research Pte Ltd Jul 28, 2017	ACCUMULATE	7.63
CapitaLand Retail China Trust: Stabilising tenant sales	Tan Dehong Phillip Securities Research Pte Ltd Jul 28, 2017	NEUTRAL	1.64

Trading Calls by our analysts

Status Legend

- ▲ : Upgraded
- ▼ : Downgraded
- ▶◀ : Maintained

HOW TO MANAGE YOUR ACCOUNT

Account Management | Intraday Profit / Loss | Trading Limit

Account Management

Review your account and other related information

EQ

a. Outstanding Positions

All your outstanding positions due for payment

b. Account Details

Account ledger details

c. Scrip Positions

For all accounts except Cash Trading accounts

d. This Month's Transactions

All your transactions for the current month

e. Transactions History

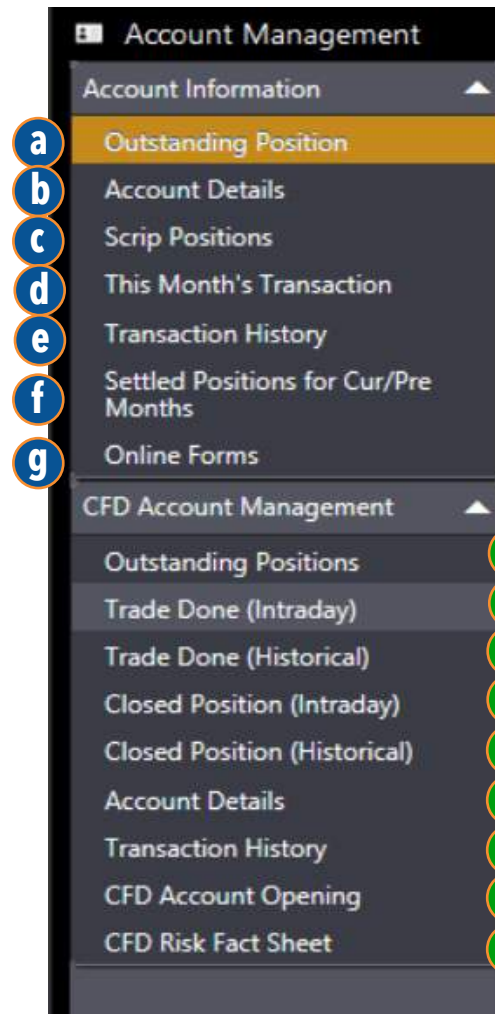
All your transactions for the past 1 year

f. Settled Positions for Current and Previous Month

Lists down the outstanding positions successfully settled for the current and previous months

g. Online Forms

Currently not available



CFD

h. Outstanding Positions

All outstanding CFD positions

i. Trade Done (Intraday)

Details on CFD trades done within the current trading day

j. Trade Done (Historical)

Details of CFD trades done in the past (Up to 6 months)

k. Closed Position (Intraday)

Details on CFD positions closed within the current trading day

l. Closed Position (Historical)

Details on CFD positions closed in the past (Up to 6 months)

m. Account Details

Details on account ledger

n. Transaction History

All account transactions (Up to 6 months)

o. CFD Account Opening

Application form for the activation of the CFD Trading Facility

p. CFD Risk Fact Sheet

Risk Fact Sheet for CFDs to be read through and acknowledged by CFD Account Holders

HOW TO MANAGE YOUR ACCOUNT

Account Management | Intraday Profit / Loss | Trading Limit

Intraday Profit / Loss

See how well your portfolio is performing real-time

a. Open Profit/Loss

Shows the real time intraday open position and its profit/loss

b. Close Profit/Loss

Shows the profit/loss of intraday closed or liquidated positions

Stock Name	Status	Executed Qty	Avg. Price	Market Last	Exg Rate	Open P/L (SGD)
1	2	3	4	5	6	7

Definitions

- 1. Stock Name** – The name of the counter that have been bought or sold
- 2. Status** – Buy/Sell action
- 3. Executed Qty** – The quantity that has been bought or sold for that counter. Sell outstanding trades will be displayed as negative quantity. Buy outstanding trades will be displayed as positive quantity
- 4. Avg. Price** – The average price will be calculated if there are multiple trades executed at different prices
- 5. Market Last Done** – The real time market last done price
- 6. Exg Rate** – Current exchange rate of the currency settled
- 7. Open P/L** – Shows your profit/loss for the current day. Which includes all open positions

Trading Limit

View available buy/sell limits and balance

Available Buy Limit: 1,000.00	Available Sell Limit: 1,000.00	Funds Balance: 0.00
-------------------------------	--------------------------------	---------------------

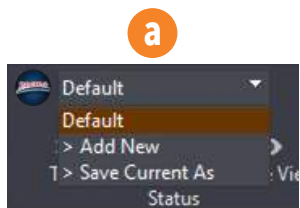
HOW TO CUSTOMISE THE PLATFORM

Workspaces and Tabs | Windows and Multi-Screen | Settings | Themes and Languages | Keyboard Shortcuts

Workspaces and Tabs

Workspace

A workspace is a collection of tabs. You can use the preset workspaces, modify them or create your own. In a workspace, you are not limited by the number of tabs you want.



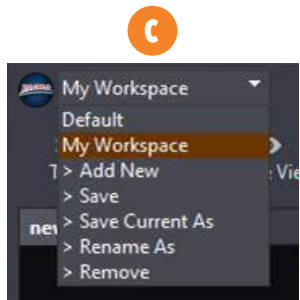
a. Selecting a Workspace

- Click on the workspace dropdown (see top left corner of the platform)
- Click on a preset workspace name or any previously added custom workspaces



b. Creating a New Workspace

- Click on the Workspace dropdown
- Click on > Add New. The dropdown will change into a text field
- Type in the name of your new workspace and press Enter



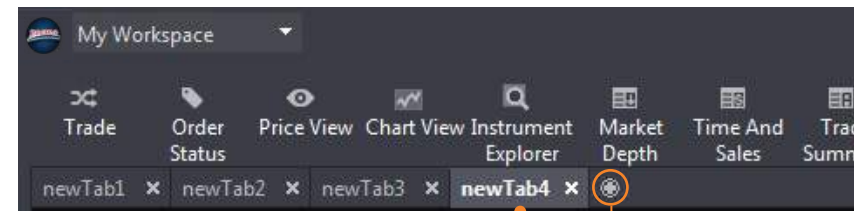
c. Saving/Duplicating/Renaming/Removing a Custom Workspace

- Select and load a custom workspace
- Click on the corresponding action item on the list (after the workspace names)

*Changes made in the default workspace are not saved and will not be reflected upon re-login to the platform

Tab

A tab is a container of windows. When you add a new tab, it is initially empty. You can then place and arrange as many windows inside a tab. Tabs can be added, deleted, renamed or rearranged.



Double/right-click to rename, right-click to delete watchlist or click on **X**

To add a new tab, click here

Adding a Tab

- Click on the + button found after the last tab

Removing a Tab

- Click on the x button found in the tab header

Rearranging Tabs

- Hold click and drag the tab header to the left or right

HOW TO CUSTOMISE THE PLATFORM

Workspaces and Tabs | **Windows and Multi-Screen** | Settings | Themes and Languages | Keyboard Shortcuts

Windows and Multi-Screen

Window

A window is any one of the modules that you can find in the Main Navigation Toolbar, each with specific functions and properties. Some windows can only be added once per tab, others can have several copies.

Adding a window inside a tab

- Click on your preferred tab
- Click on your preferred window from the Main Navigation Toolbar

Rearranging windows

- Hold click and drag the window header part and place drop anywhere the tab container space. Windows can overlap one another

Removing a Window

- Click on the x button found in the window header top-right corner



Multi-Screen Support

To fully utilise the capabilities of POEMS Pro, we would recommend using the platform with 3 additional screens.

Detaching Individual Windows



Click to detach window and drag out of the application or/and into another screen

Linking Individual Windows



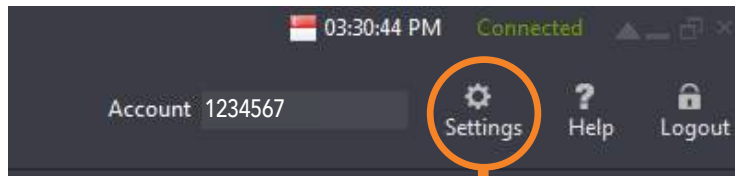
Click to link Trade and ChartView modules to PriceView. All linked windows will show the same counter details with just one click on the counter

HOW TO CUSTOMISE THE PLATFORM

Workspaces and Tabs | Windows and Multi-Screen | **Settings** | Themes and Languages | Keyboard Shortcuts

Settings

POEMS Pro allows you to modify particular window settings and functionality to empower your trading



a. Trade Settings

See [How To Trade > Trade Settings](#) to know more information about what each item means

b. Order Status Settings

See [How To Trade > Order Status](#) to know more information about what each item means

c. Watchlist Settings

See [How To Monitor the Market > Watchlist](#) to know more information about what each item means

d. Alert Settings

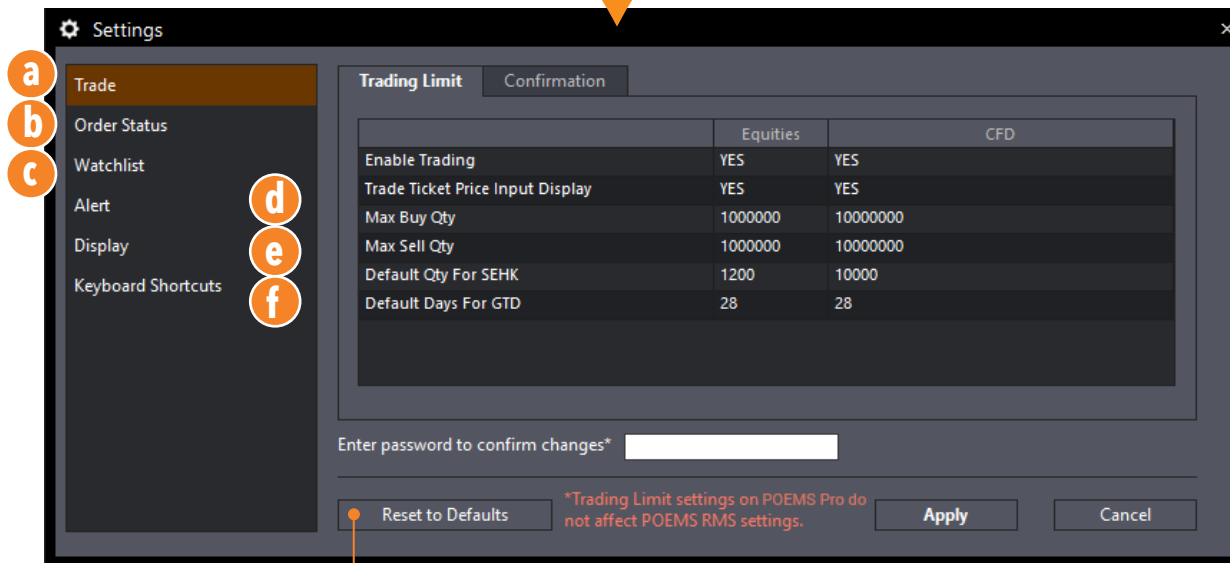
See [How To Monitor the Market > Alert](#) to know more information about what each item means

e. Display Settings

See [Themes and Languages](#) to know more information about what each item means

f. Keyboard Shortcuts

See [Keyboard Shortcuts](#) to know more information about what each item means



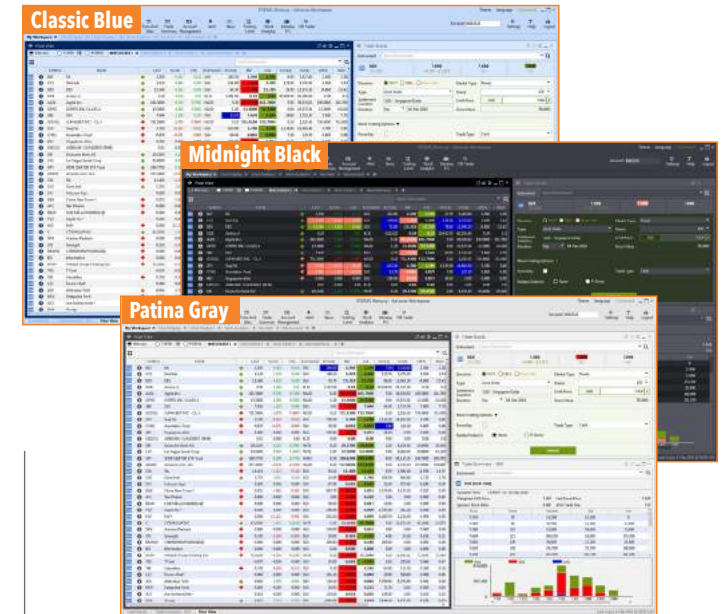
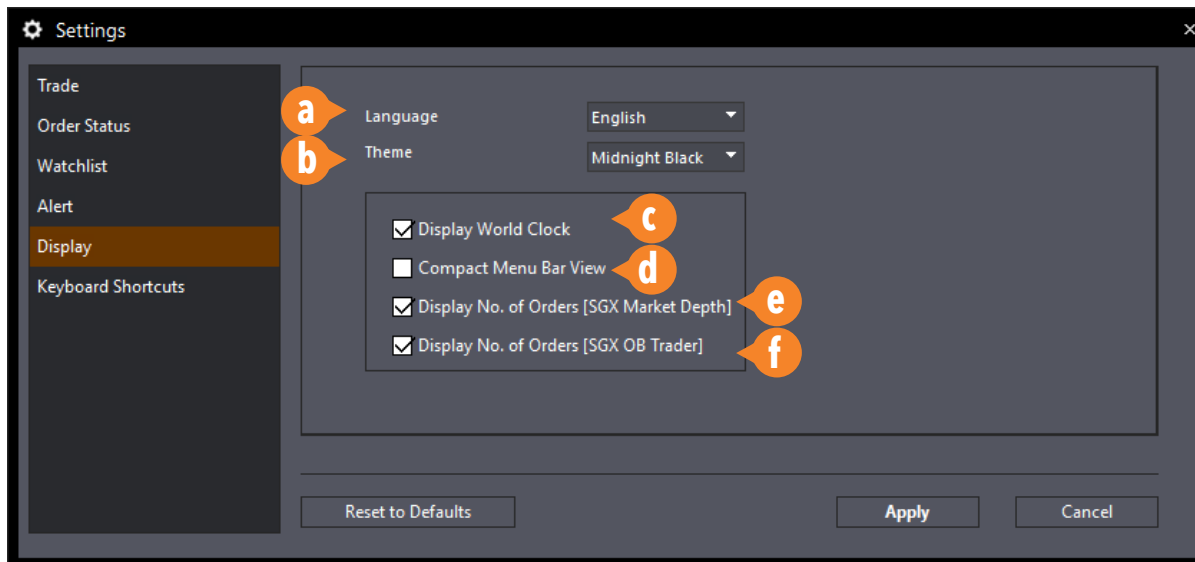
Reset all settings to default

HOW TO CUSTOMISE THE PLATFORM

Workspaces and Tabs | Windows and Multi-Screen | Settings | **Themes and Languages** | Keyboard Shortcuts

Themes and Languages

Further customize the platform according to your personal preferences with Themes and Languages



Display Settings

- a. Choose preferred language
- b. Select from 3 different themes, **Midnight Black**, **Classic Blue** and **Patina Gray**
- c. Choose to display World Clock at the top menu bar
- d. Choose to hide main navigation menu icons
- e. Choose to display No. of Orders in Market Depth
- f. Choose to display No. of Orders in OB Trader

HOW TO CUSTOMISE THE PLATFORM

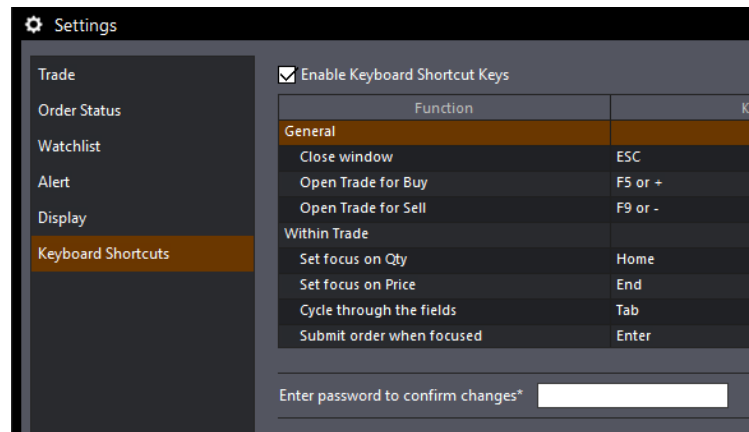
Workspaces and Tabs | Windows and Multi-Screen | Settings | Themes and Languages | **Keyboard Shortcuts**

Keyboard Shortcuts

Keyboard Shortcuts enables you to fill up trade tickets and send in your orders with greater ease and convenience

To enable Keyboard Shortcuts

- Go to Settings > Select 'Keyboard Shortcuts' from the main menu (left side)
- Check the 'Enable Keyboard Shortcut Keys' box at the top
- Enter your password to confirm

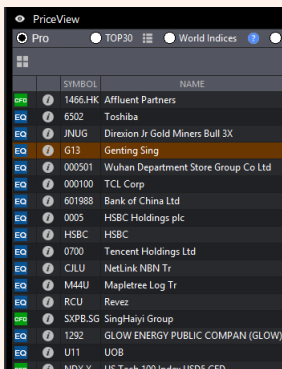


General (Default)	
Close Window	ESC
Open Trade for Buy	F5 or +
Open Trade for Sell	F9 or -

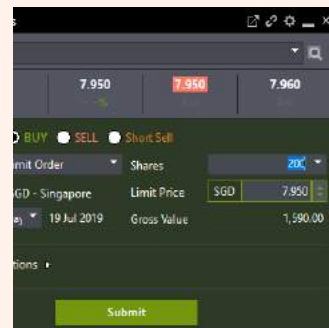
Within Trade (Default)	
Set focus on Qty	Home
Set focus on Price	End
Cycle through the fields	Tab
Submit order when focused	Enter
Toggle to Buy	F5 or +
Toggle to Sell	F9 or -

*Shortcut buttons can be changed in the settings

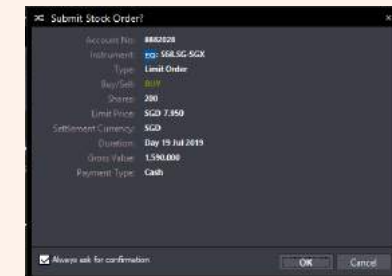
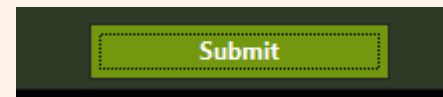
How to launch a ticket from the Watchlist & submit a trade with Keyboard Shortcuts



- After you click on a counter on the Watchlist, press the **plus '+'** or **minus '-'** sign on your keyboard to launch a buy or sell trade ticket respectively



- Then, enter the quantity you wish to trade, and press the **'Tab'** key to move to the price field.
- Once you have ensured that the correct price is entered, press the **'Tab'** key again to move the focus to the Submit button. When you see a dotted box on the Submit button, press the **'Enter'** key and your order will be submitted.



- Should you have had your order confirmation box enabled, you will have to press **'Enter'** once more to complete the trade submission.